

X2 RACELINK

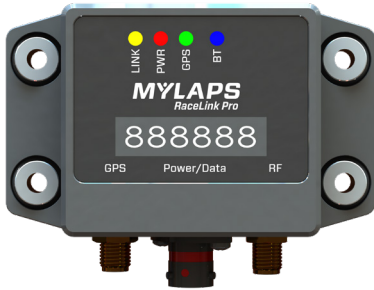
PRO



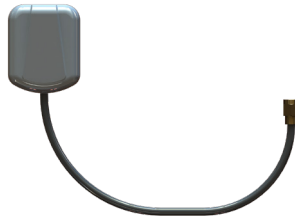
QUICK START GUIDE



WHAT'S IN THE BOX?



X2 RaceLink Pro



GPS Antenna



RF Antenna
Extension Cable - 1M



RF Antenna Connector

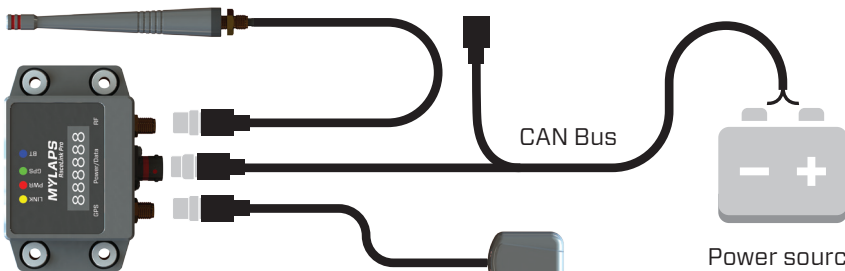


RF Antenna

SETUP

RF Antenna

Optional Sensor



X2 RaceLink Pro

GPS Antenna

Power source
(Power Cable not included)

IN CASE YOU ENCOUNTER ANY ISSUES, PLEASE CONTACT YOUR LOCAL OFFICE

MYLAPS EMEA Office
Haarlem, The Netherlands
☎ +31 (0)23 760 0100
✉ info@mylaps.com

MYLAPS Americas Office
Atlanta, USA
☎ +1 678 816 4000
✉ info.americas@mylaps.com

INSTALLATION

- ▶ Make sure the GPS Antenna has a clear view to the sky at all times during racing
- ▶ Do not place the GPS Antenna next to other RF Antennas. Keep at least 1m distance
- ▶ Make sure the RF Antenna is placed as high as possible on the vehicle mounted on a conducting ground plane, having a clear view around the vehicle at all times during racing
- ▶ Do not place the RF Antenna next to other RF Antennas. Keep at least 1m distance
- ▶ Place the X2 RaceLink Pro in an area of the vehicle where the temperature does not get higher than 60 degrees Celsius (140 degrees Fahrenheit)
- ▶ When using an extension cable from the RF Antenna to the device, make sure to use a low loss (<1dB@2.4GHz) cable
- ▶ It is not recommended to shorten the cables

SPECIFICATIONS

DIMENSIONS	75x45x24mm / 3x1.8x1in	POSITIONING	3 concurrent GNSS reception
WEIGHT	85g / 0.19lb	SENSITIVITY	-167dBm, 72 channels
OPERATING VOLTAGE RANGE	7 to 18VDC typical 12V	UPDATE RATE GPS	5Hz
POWER CONSUMPTION	1.3W, 110mA@12V	GNSS ANTENNA CONNECTION	SMA(F), 3.0V active antenna
BACK UP BATTERY LIFETIME	Up to 8 hours	RF ANTENNA CONNECTION	RP-SMA(F)
BACK UP BATTERY CHARGING	1:2 ratio, 4 hours for full charge	MAXIMUM THROUGHPUT	Up to 128 messages/sec (GPS/CAN)
OPERATING TEMPERATURE RANGE	0 to 60 °C / 32 to 140F	RF OUTPUT	+20dBm@2.4GHz ISM
HUMIDITY RANGE	10% to 90% relative	BLUETOOTH MODE	5VDC

MYLAPS Japan Office
Tokyo, Japan

☎ +81 3 6418 8209

✉ info.japan@mylaps.com

MYLAPS APAC Office
Sydney, Australia

☎ +61 2 9533 1100





✉ info.asia.pacific@mylaps.com

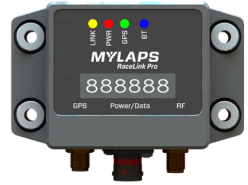
MYLAPS Asia Office
Selangor, Malaysia

☎ +60 3 5613 1235

✉ info.asia@mylaps.com

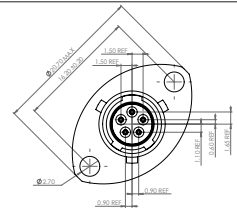
LED INDICATION

NAME	COLOR	INDICATION
 LINK	YELLOW	BLINK = IN RANGE OF AN X2 BASELINK
 POWER	RED	BLINK = RUNNING FROM INTERNAL BATTERY ON = POWER OK
 GPS	GREEN	BLINK = GNSS LOCK
 BL	BLUE	BLINK = READY FOR BLUETOOTH CONNECTION ON = BLUETOOTH CONNECTION ESTABLISHED



DEUTSCH CONNECTOR PIN-OUT

PIN	POWER / CAN CONNECTOR: TYPE: DEUTSCH ASU003-05PN
P1	12VDC
P2	GND
P3	CAN L
P4	CAN H
P5	OPEN COLLECTOR OUT
	CONTRA CONNECTOR DEUTSCH ASU603-05SN



CABLE SPECIFICATIONS

Delock 89423 Antenna Cable RP-SMA plug > RP-SMA jack CFD/RF200 1m low loss

- ▶ **Connectors** RP-SMA plug > RP-SMA jack
- ▶ **Cable type** CFD/RF200
- ▶ **Attenuation** 2.4 GHz: 0.55 dB per meter
- ▶ **Impedance** 50 Ohm
- ▶ **Cable diameter** 4.8 mm
- ▶ **Colour** black
- ▶ **Length** ca. 1 m



An RP-SMA(M) RG174 crimp connector needs to be mounted to the bare RG174 coax cable of this RF Antenna after mounting the Antenna to the vehicle